

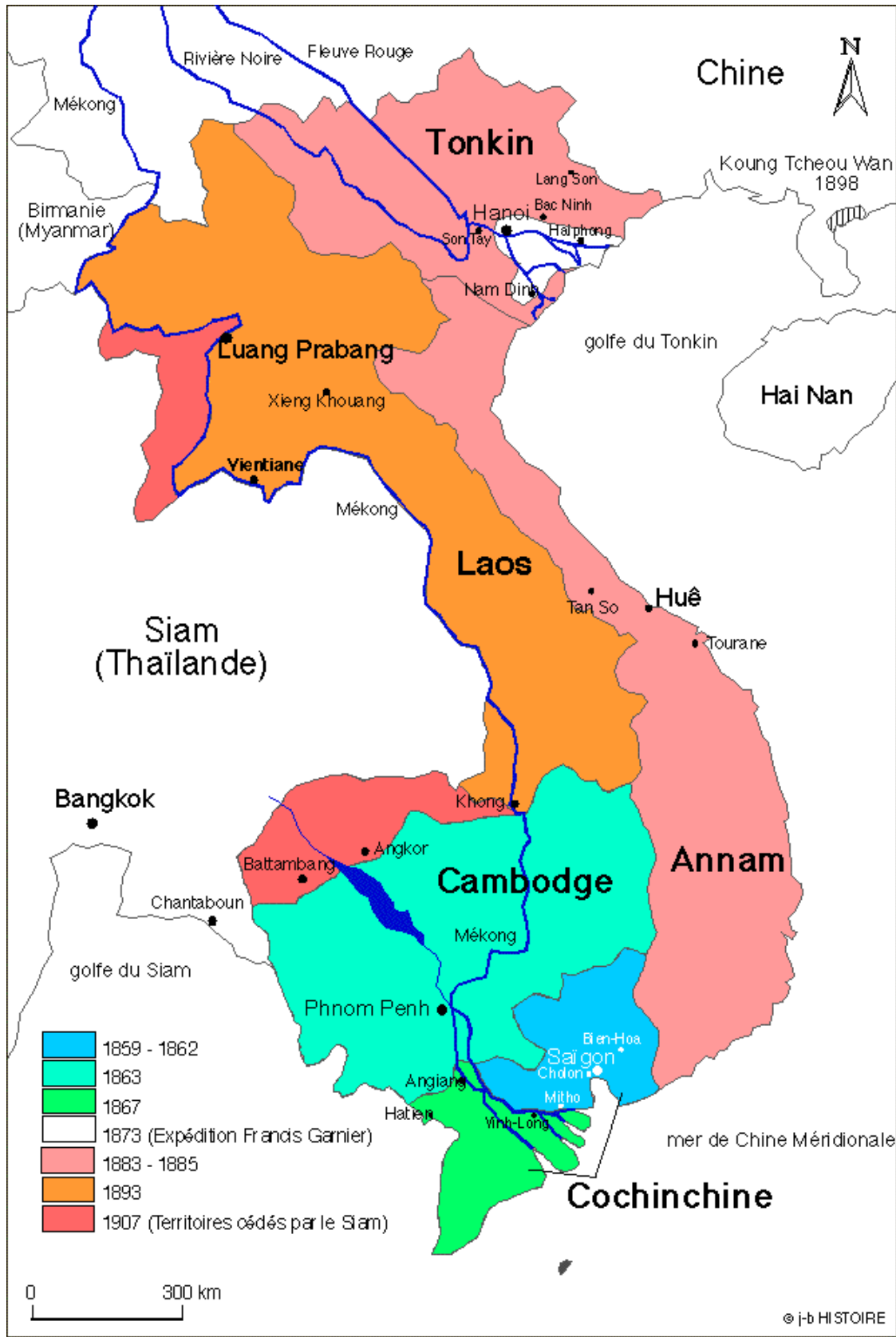
Southern Asia

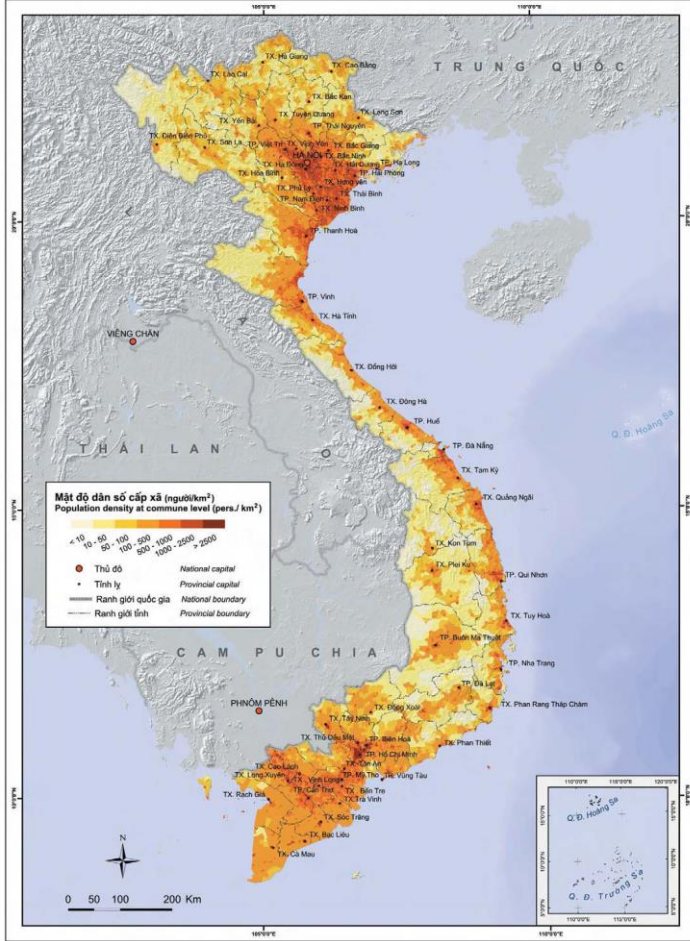


Southeast Asia







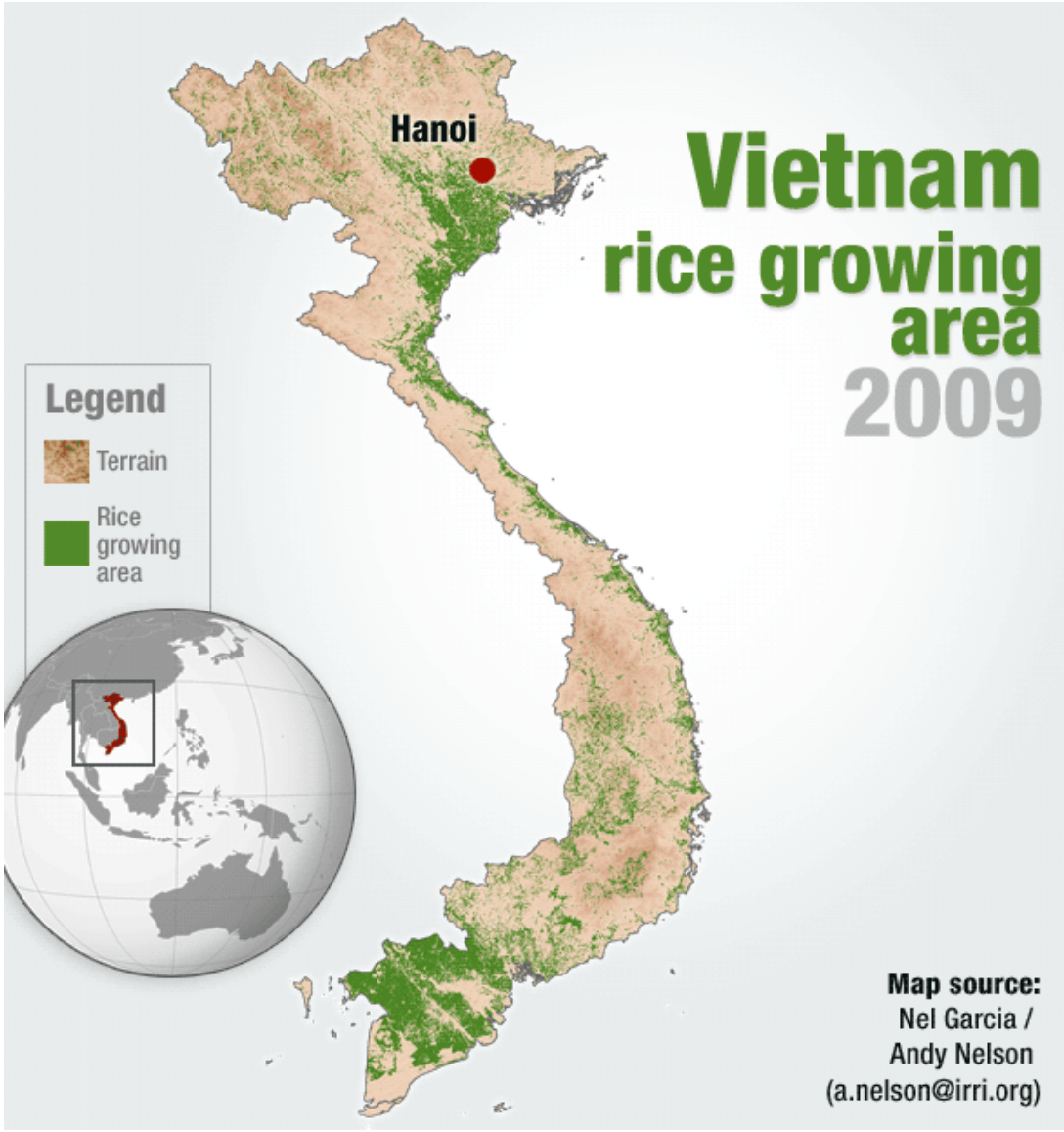


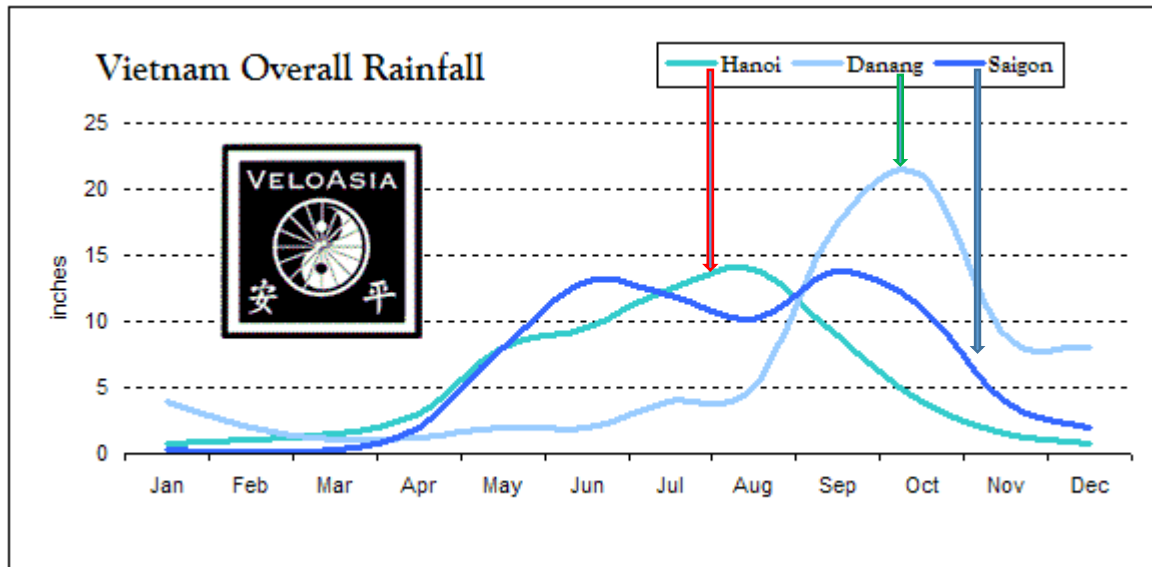
POPULATION DENSITY

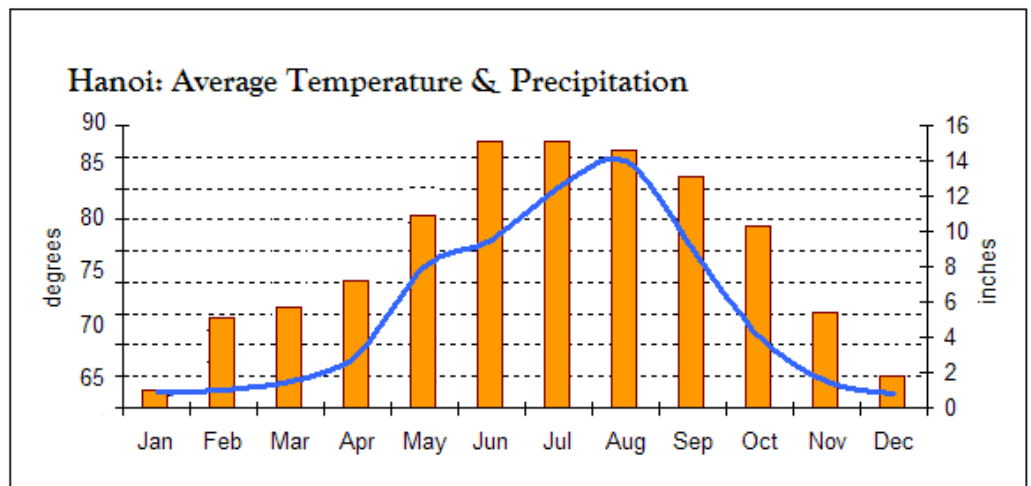
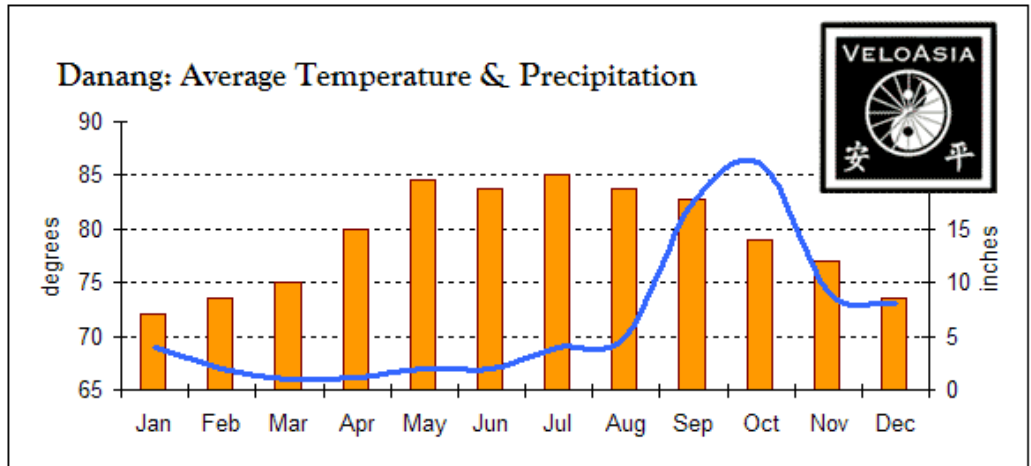
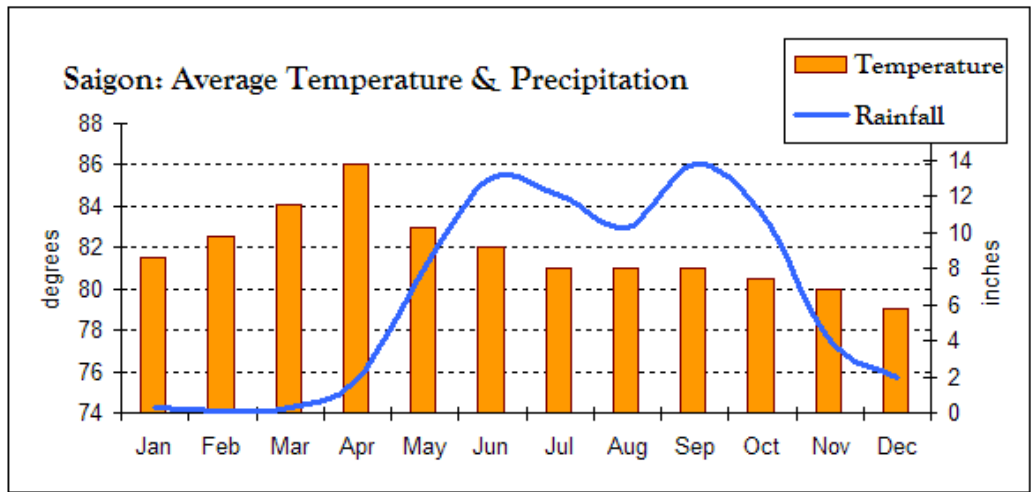
http://www.stockmapagency.com/Natural_Earth_Map_Vietnam_C-Viet-2007-NE.php

<http://www.worldometers.info/world-population/population-by-country/>

<http://www.worldatlas.com/articles/29-largest-armies-in-the-world.html>







	January	February	March	April	May	June	July	August	September	October	November	December
Hanoi	+10-15°C 	+ 20 - 25°C 	+ 23 - 25°C 	+ 32 - 35°C 	+ 35 - 37°C 	+ 37 - 40°C 	+ 37 - 40°C 	+ 37 - 40°C 	+ 32 - 35°C 	+ 28 - 30°C 	+ 18 - 20°C 	+ 14 - 16°C
Hue	+ 20 - 25°C 	+ 26 - 28°C 	+ 30 - 32°C 	+ 32 - 35°C 	+ 32 - 35°C 	+ 30 - 33°C 	+ 30 - 33°C 	+ 30 - 33°C 	+ 28 - 30°C 	+ 26 - 28°C 	+ 22 - 24°C 	+ 20 - 22°C
Da Nang				Crystal sea								
Hoi An					Crystal sea							
Nha Trang	+ 25 - 27°C 	+ 27 - 29°C 	+ 30 - 32°C 	+ 32 - 35°C 	+ 32 - 35°C 	+ 30 - 33°C 	+ 30 - 33°C 	+ 30 - 33°C 	+ 30 - 33°C 	+ 28 - 30°C 	+ 26 - 28°C 	+ 26 - 28°C
	wind			Crystal sea								
Mui Ne	+ 27 - 29°C 	+ 28 - 30°C 	+ 30 - 32°C 	+ 32 - 35°C 	+ 32 - 35°C 	+ 30 - 33°C 	+ 30 - 33°C 	+ 30 - 33°C 	+ 29 - 31°C 	+ 29 - 31°C 	+ 29 - 31°C 	+ 28 - 29°C
Phan Thiet												
Saigon	+28-29°C 	+ 28 - 30°C 	+ 30 - 32°C 	+ 32 - 35°C 	+ 32 - 35°C 	+ 30 - 33°C 	+ 30 - 33°C 	+ 30 - 33°C 	+ 29 - 31°C 	+ 29 - 31°C 	+ 28 - 29°C 	+ 28 - 29°C
Vung Tau												
Phu Quoc												
Con Dao												

MONTH	1	2	3	4	5	6	7	8	9	10	11	12
NORTH	Blue	Blue	Blue	Red	Red	Red	Orange	Orange	Orange	Blue	Blue	Blue
CENTER	Blue	Blue	Blue	Red	Red	Red	Red	Red	Yellow	Yellow	Yellow	Blue
SOUTH	Red	Red	Red	Red	Red	Orange	Orange	Orange	Orange	Orange	Blue	Blue

(Vietnam Weather Diagram - www.charmingindochina.com)

	Cold & high humidity
	Hot temperature, less rain
	Hot temperature, much rain
	Heavy rain & flood
	Cold & dry

VIETNAM

Latitude and Longitude Map



Ethnic Groups

AUSTROASIATIC

- Vietnamese
- Mon-Khmer (Cambodian)
- Mon-Khmer (tribal groups)

MALAYO-POLYNESIAN

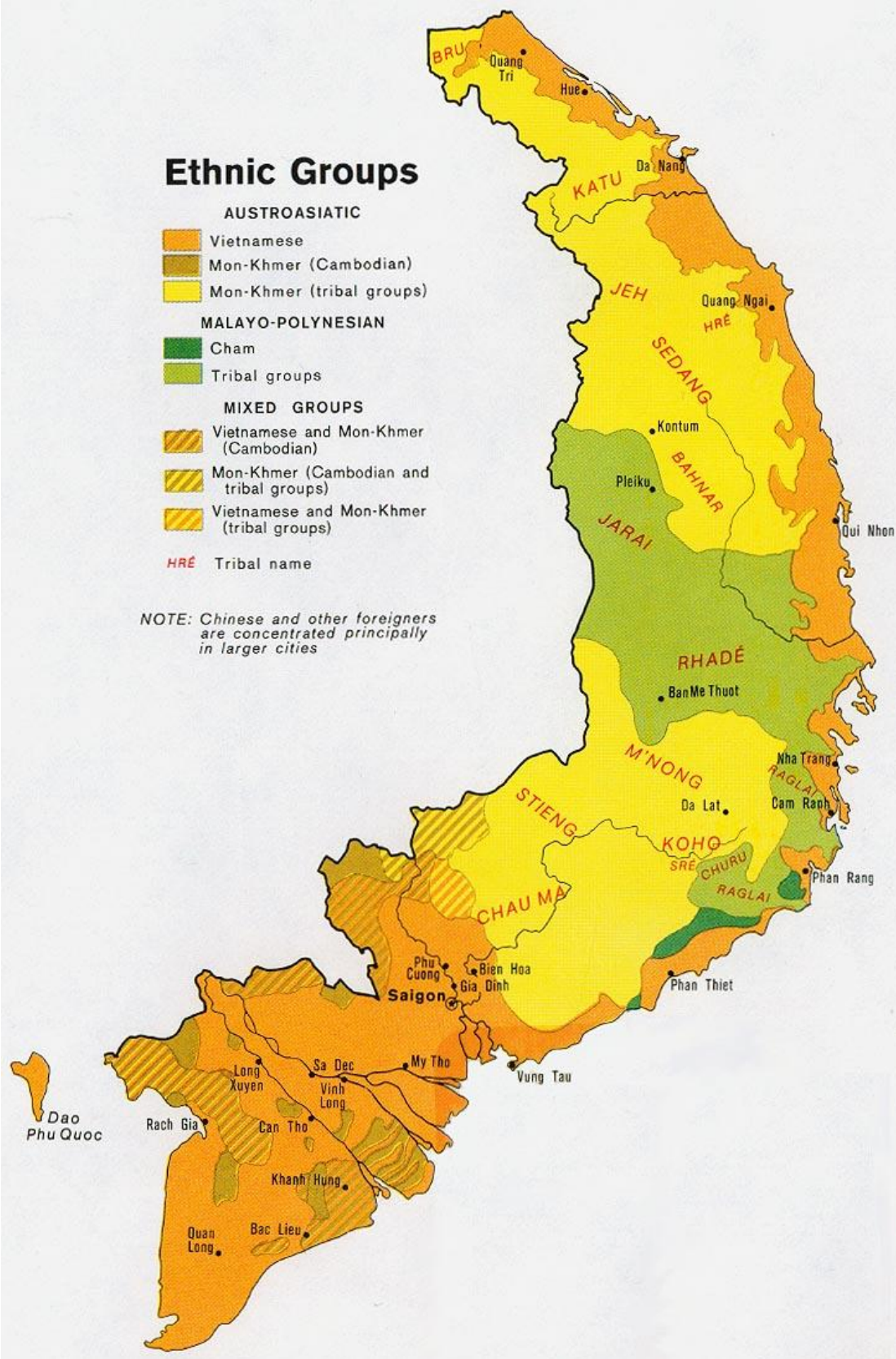
- Cham
- Tribal groups

MIXED GROUPS

- Vietnamese and Mon-Khmer (Cambodian)
- Mon-Khmer (Cambodian and tribal groups)
- Vietnamese and Mon-Khmer (tribal groups)

HRÉ Tribal name

NOTE: Chinese and other foreigners are concentrated principally in larger cities



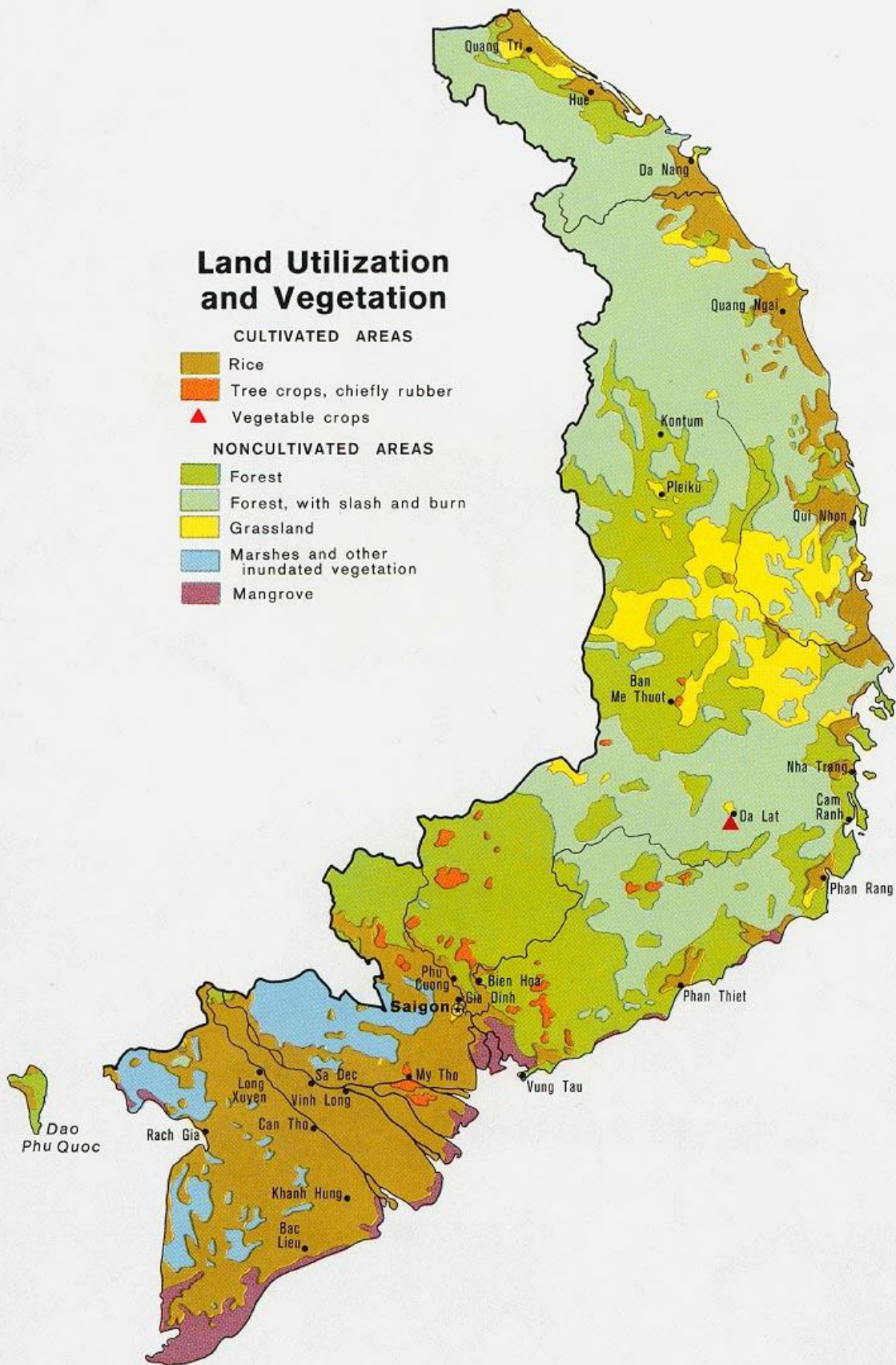
Land Utilization and Vegetation

CULTIVATED AREAS

- Rice
- Tree crops, chiefly rubber
- Vegetable crops

NONCULTIVATED AREAS

- Forest
- Forest, with slash and burn
- Grassland
- Marshes and other inundated vegetation
- Mangrove



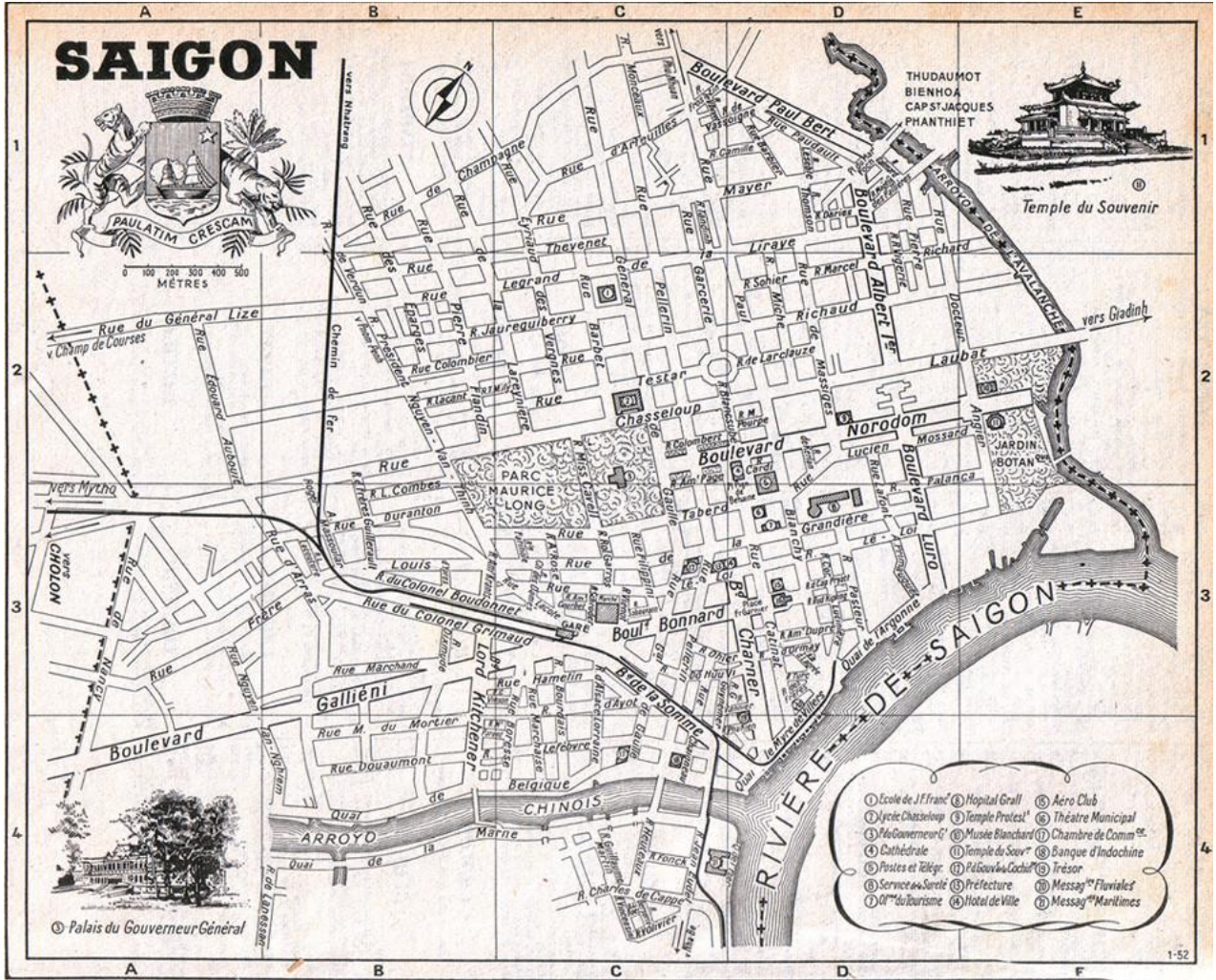
SAIGON



0 100 200 300 400 500
MÈTRES

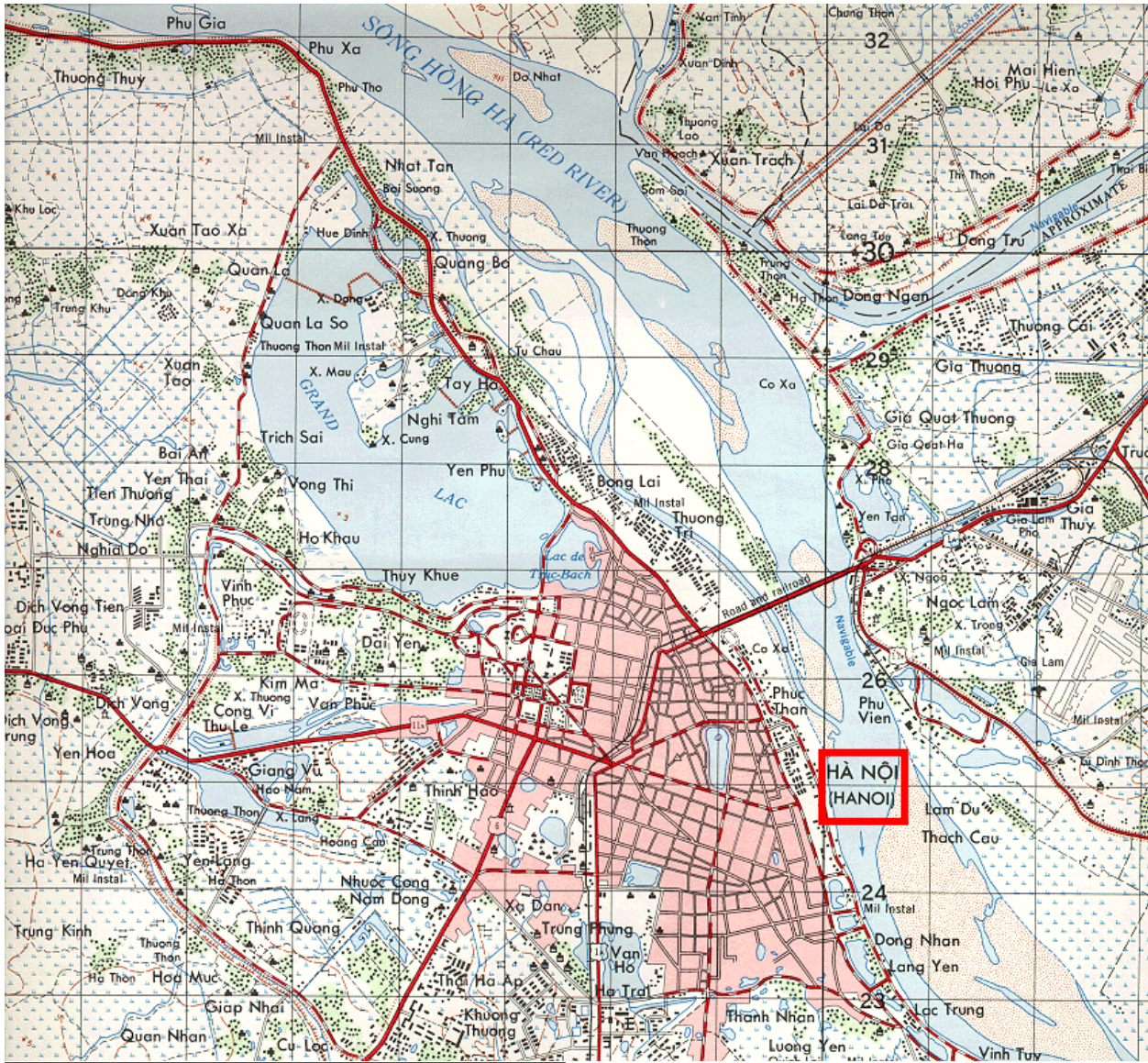


Temple du Souvenir



Palais du Gouverneur Général

- ① Ecole de J. Franc
- ② Lycée Chasseloup
- ③ Préf. du Gouverneur G.
- ④ Cathédrale
- ⑤ Postes et Télég.
- ⑥ Service de Santé
- ⑦ Off. de Tourisme
- ⑧ Hôpital Grall
- ⑨ Musée Blanchard
- ⑩ Temple du Souv.
- ⑪ P. Bourville-Cochet
- ⑫ Préfecture
- ⑬ Hôtel de Ville
- ⑭ Aero Club
- ⑮ Théâtre Municipal
- ⑯ Chambre de Comm. ec.
- ⑰ Banque d'Indochine
- ⑱ Trésor
- ⑲ Messag. Fluviales
- ⑳ Messag. Maritimes





VIETNAM - America's Longest War, 1955-75

Ia Drang, 1965

1st Cav Div in the long war's first major battle.

Hue City, 1968

U.S. Marines' deadly urban combat.

Saigon Embassy, 1968

VC sappers attack U.S. Embassy.

DMZ

HANOI

Dien Bien Phu

Hue

Khe Sanh

A Shau Valley

Da Nang

Ia Drang

An Loc

Saigon (Ho Chi Minh City)

0 50 miles
0 100 kilometers

N

Khe Sanh, 1968

Marines endure a bloody siege.

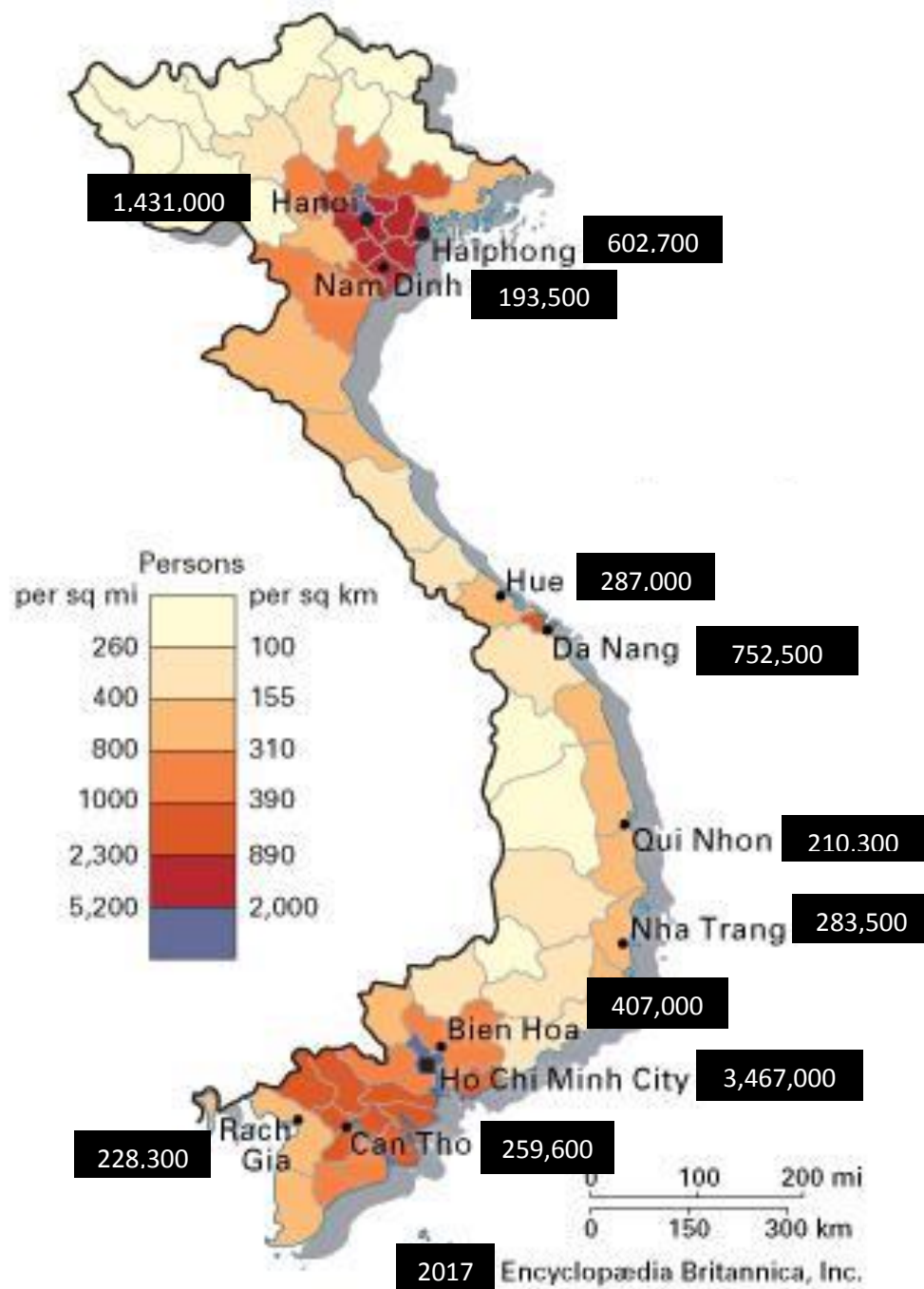
Hamburger Hill, 1969

101st Abn Div's brutal slugfest.

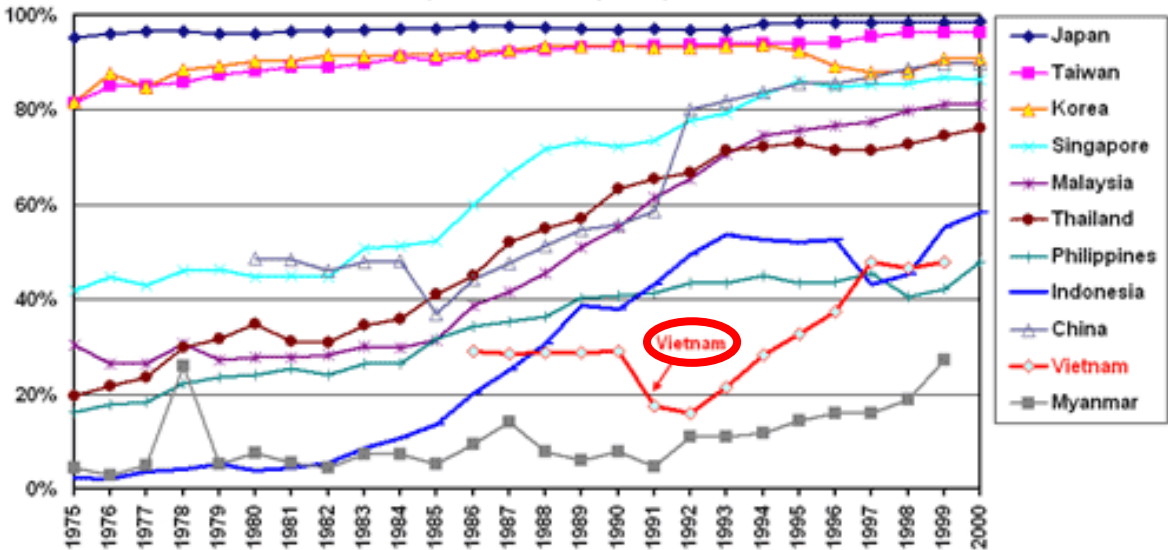
An Loc, 1972

U.S. airpower turns back NVA tanks.

GRAPHICS: GREGORY PROCH

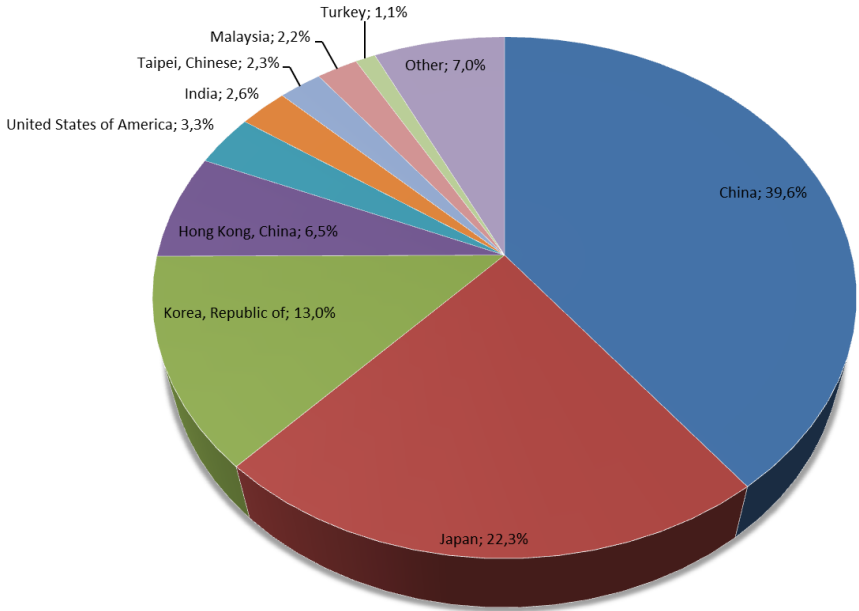


Manufactured Exports (% of total exports)



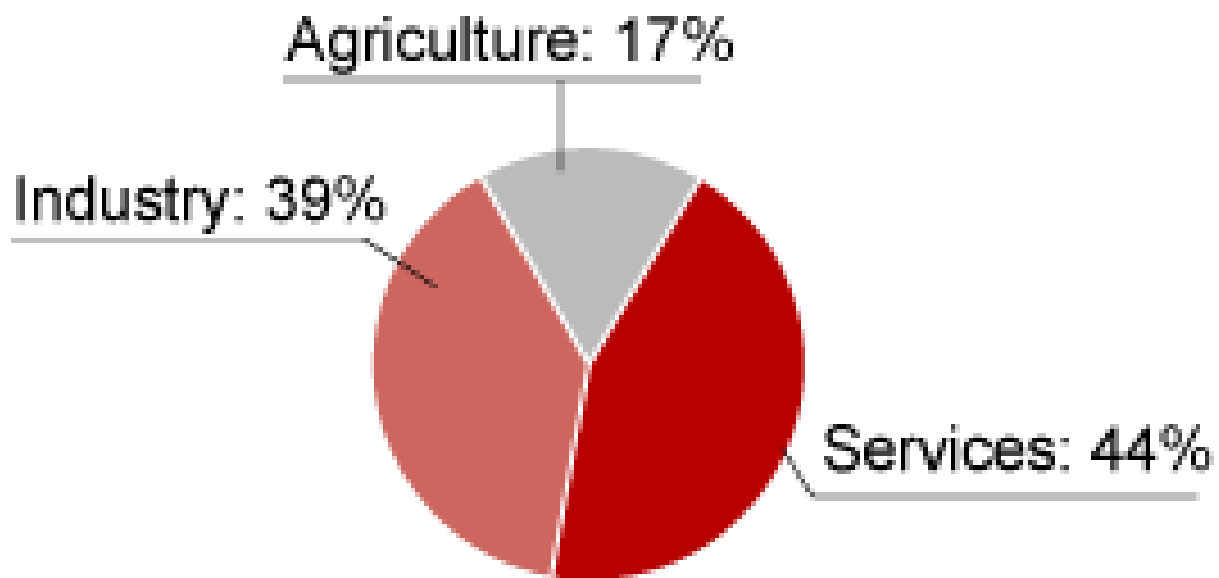
Source: ADB, *Key Indicators of Developing Asian and Pacific Countries*, 2001/1993; IMF, *International Financial Statistics Yearbook 1990*. For Japan, *Japan Statistical Yearbook 2002/1999*, Statistics Bureau/Statistical Research and Training Institute, Ministry of Public Management, Home Affairs, Posts and Telecommunications, Japan.

Top-10 export markets of Viet Nam in 2014

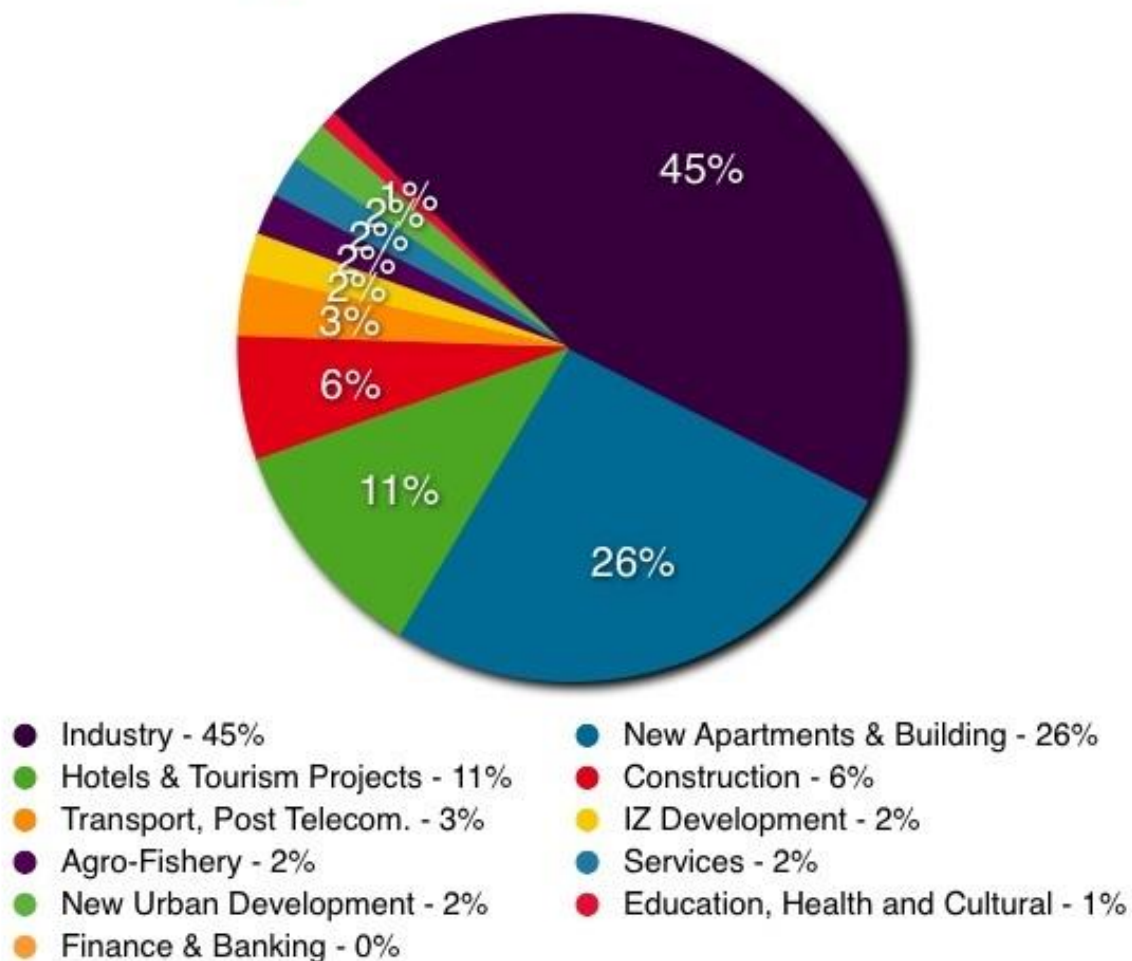


Source: ITC (2015) *Main markets, in terms of export value, for the product '44 Wood and articles of wood, wood charcoal' exported by Viet Nam in 2014*

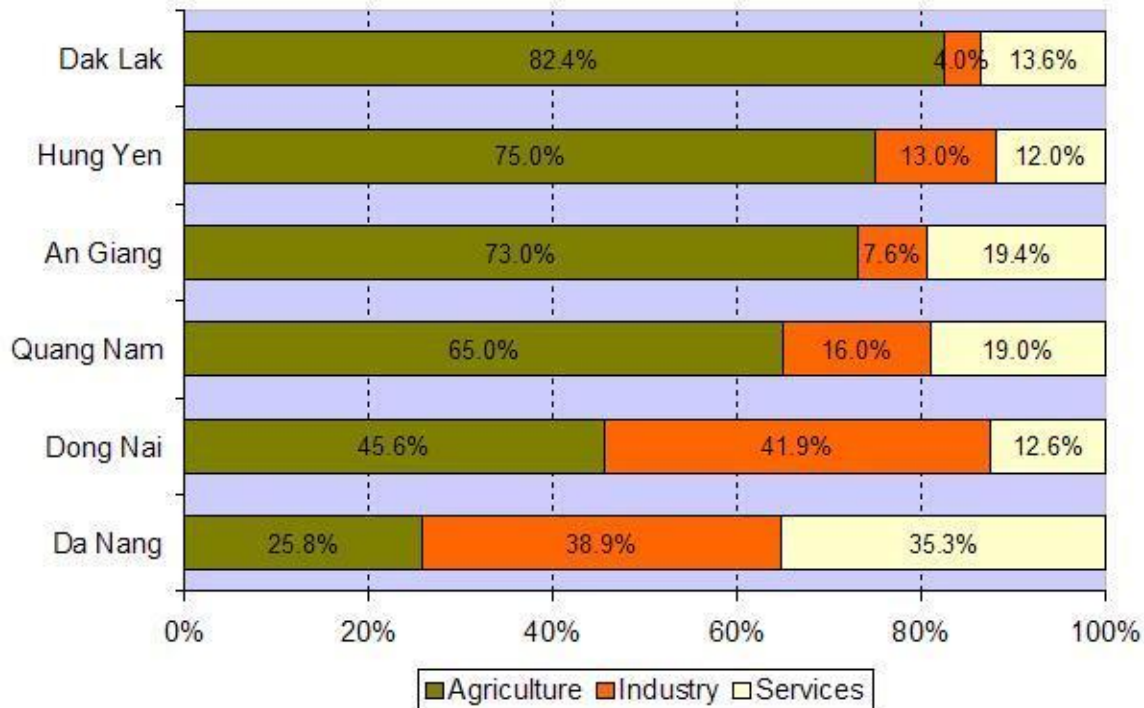
Vietnam GDP by Sector (2015)



Type of FDI Projects in Vietnam 2007

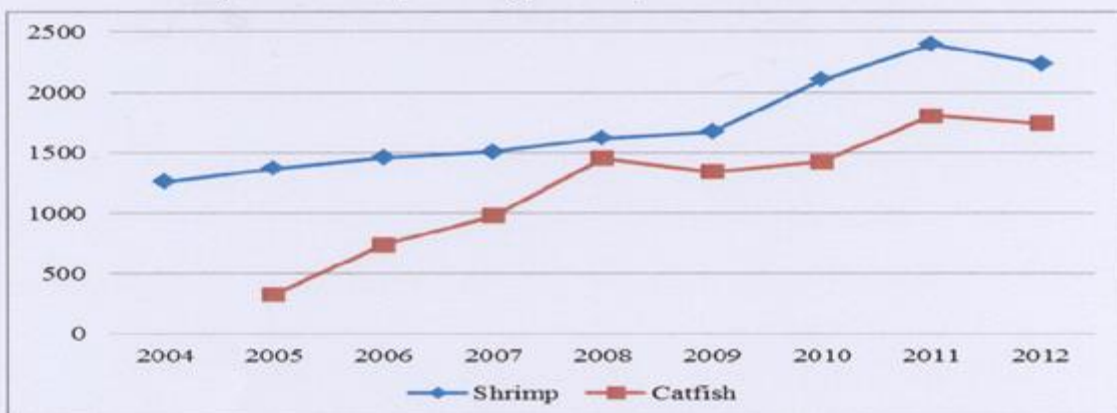


Labor force distribution



Graph 2 Labor force distribution of some provinces
 Source: Ministry of Planning and Investment of Vietnam

Figure 7: Shrimp and Pangasius Export turnover 2004 -2012



Source: VASEP, 2012











1597415



CHINA
BEACH

